

# DIMPLE

VOLUME 1

FASHION



## LOOK BOOK

BRIDAL 2021 COLLECTION

# BRIDAL SEASON 2021

JUNE ISSUE 2021



## GOWN

HEAVY TRAIL GOWN WITH HANDWORK GOLDEN EMBROIDERY & STONE WORK . IN VOGUE THIS SEASON

DIMPLE FASHION

EXCLUSIVE

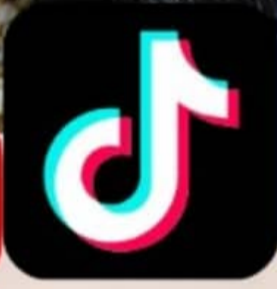
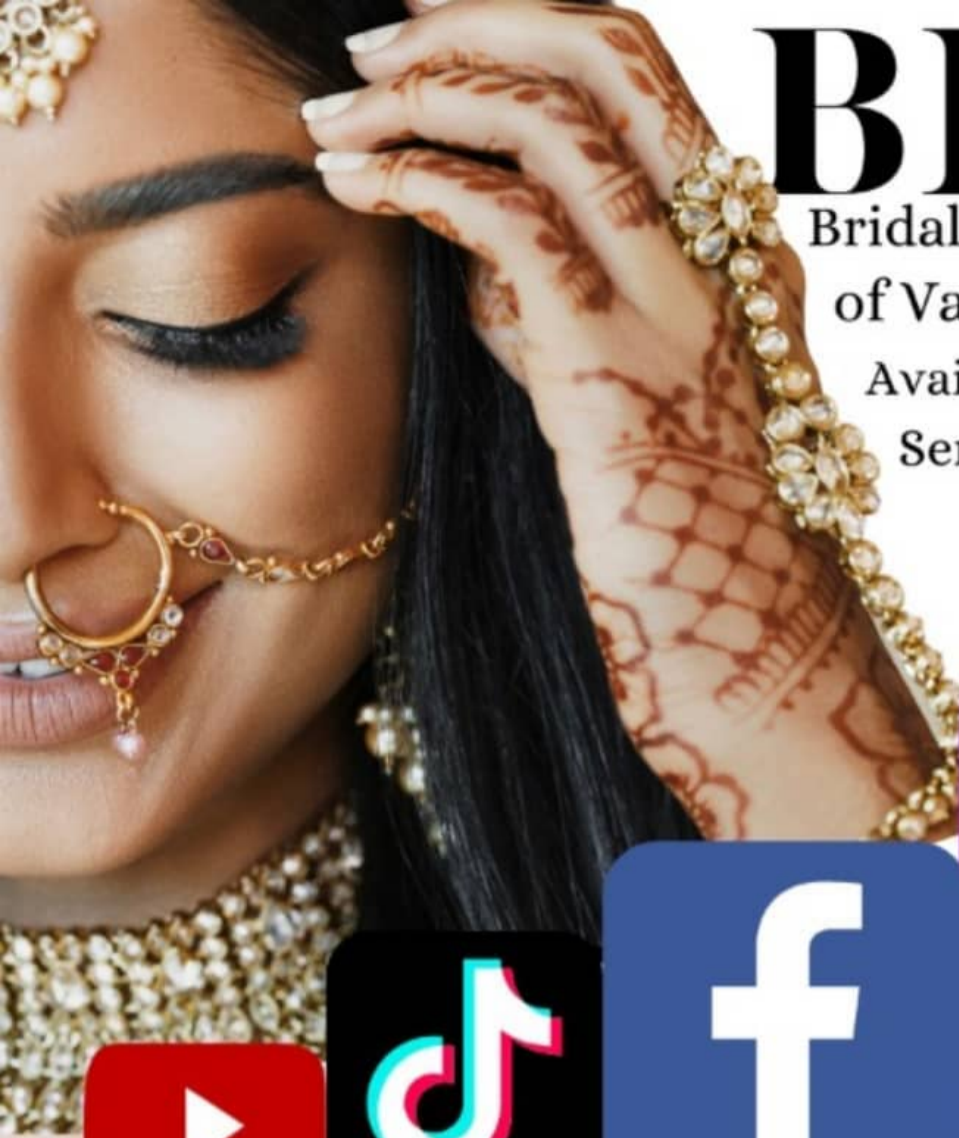
LUXURY FASHION

PEPLUM TRAIL SHIRT WITH  
HEAVY TRAIL LEHENGA.

MATCHING SEMI PRECIOUS  
STONES JEWELRY IN  
MAROON & GOLD.

# BRIDE

Bridal Jewelry with hundreds of Varieties and Colors also Available in Casual wear with Semi-Precious Stones and Premium Colors



RAISE  
THE  
BAR

@DIMPLEFASHIONUAE

# ETHNIC

Beautiful Bridal Gown with heavy Embroidery work

DIMPLE FASHION



# FASHION

TRENDS & STYLE INSPIRATION



## CLASSIC BEAUTY

VINTAGE CHARM  
WITH MODERN LUXE  
THIS GORGEOUS  
GOLDEN TRAIL GOWN  
WITH GOLDEN  
EMBROIDERY IS  
PERFECT FOR THE  
TREND-SETTING  
TRADITIONAL BRIDE



**GIVE THE TRADITIONAL THEME  
A WESTERN TWIST**

PERFECT SUMMER WEDDING  
OUTFIT



# VISIT & BE INSPIRED

DIMPLE FASHION

**+971 655691850**

DIMPLE FASHION

---



**DUSKY ON MONOCHROME  
TWIST THE TREND**

[WWW.DIMPLEFASHIONS.COM](http://WWW.DIMPLEFASHIONS.COM)



**ELEGANCE  
PERSONIFIED**



**GOWN**

**ICE CUBED SILVER TRAIL GOWN WITH CRYSTAL WORK , AGILE  
MANUFACTURED & SYMMETRIC STYLING**



QUALITY  
ETHNIC  
AUTHENTICITY  
ELEGANT

*TO BE THE ONE*

Ethnicity at its Best with a touch of Beauty & quality.  
| Bridal Wear | Groom Wear | Kids Wear | Jewellery

Dimple Fashion , Sharjah Rolla Al Mareija St. Behind KFC Pizza Hut

# PERFECT PICTURE



# FEEL LIKE A PRINCESS





**Dimple**  
FASHION

[DIMPLEFASHIONS.COM](http://DIMPLEFASHIONS.COM)

TO BOOK AN APPOINTMENT OR TO DISCUSS YOUR REQUIREMENTS PLEASE  
CONTACT US ON : 0503114076 OR [SALES@DIMPLEFASHIONS.COM](mailto:SALES@DIMPLEFASHIONS.COM)

    [@DIMPLEFASHIONUAE](https://www.instagram.com/DIMPLEFASHIONUAE)

[WWW.DIMPLEFASHIONS.COM](http://WWW.DIMPLEFASHIONS.COM)



# ELEGANCE



## LEHENGA

VIBRANT MAGENTA PINK LEHENGA CHOLI / BLOUSE  
ALL OVER HEAVY SYMMETRICAL EMBROIDERY &  
GOLDEN BRIDAL JEWELRY.

